

BUILD TO SUIT

Aerovista Place
San Luis Obispo

2.41 +/- Acres – 37,000 SF Approval for Office

ROSSETTI COMPANY

COMMERCIAL REAL ESTATE



FEATURES

Comments: Build to suit. Fully approved office project located in the popular airport area in South San Luis Obispo. Project includes city approvals and plans for 37,000 square feet of office space. Project is comprised of two buildings (can be built in phases) with parking of 1/285 SF. Located in the City of San Luis Obispo, with water and sewer services stubbed to the site.

Location: Aerovista Place, San Luis Obispo

Price: \$2.15/SF, NNN (~\$0.50)

Type: Vacant Land with Building Approvals

Total size: 2.41 +/- Acres
37,230 SF of Building Area

Zoning: Business Park



CONTACT

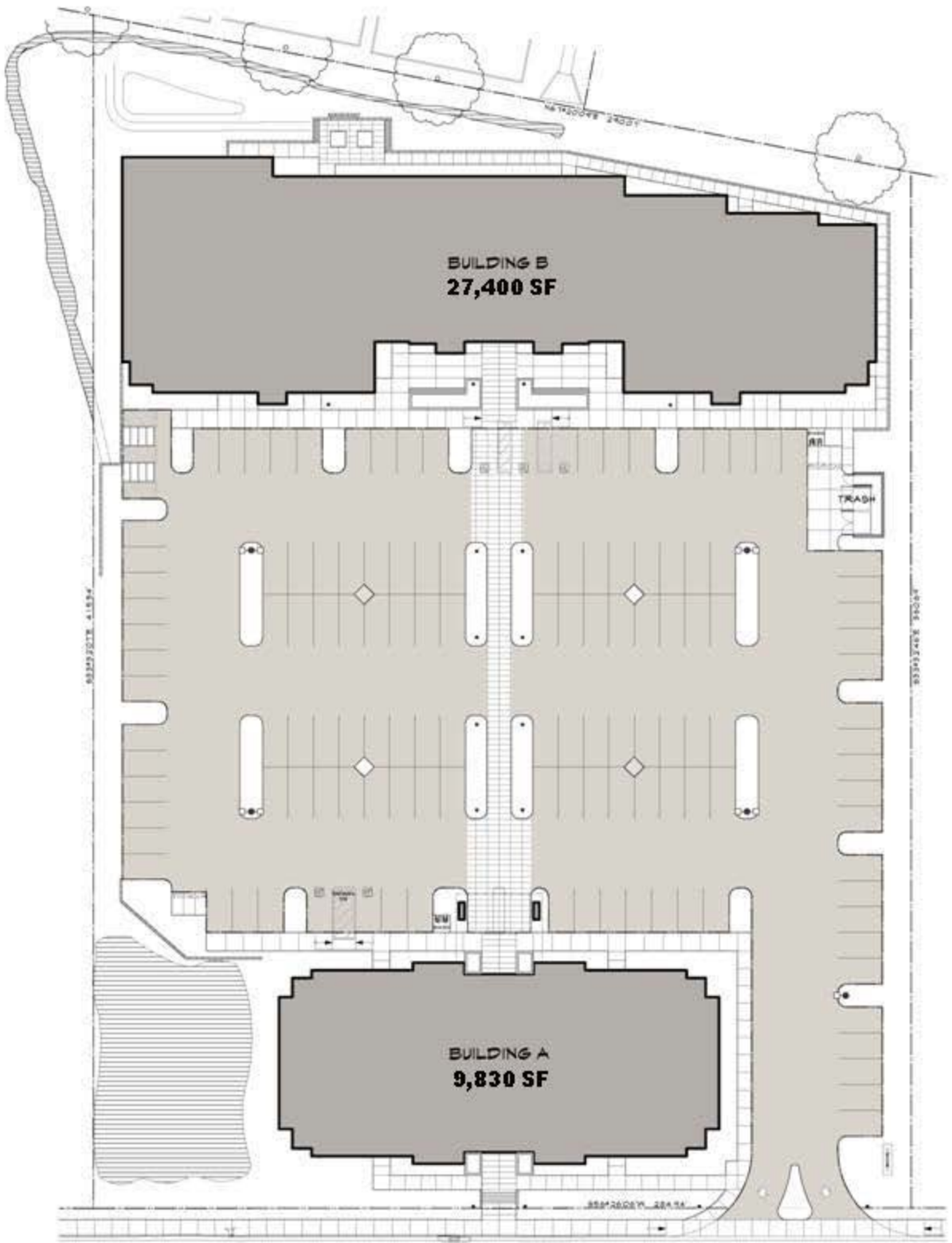
John Rossetti
805.544.3900 office
805.544.3922 fax
john@rossetticompany.com
BRE Lic. #00524464

Preston Thomas, SIOR
805.544.3900 office
805.544.3922 fax
preston@rossetticompany.com
BRE Lic. #01378821

1301 Chorro Street | San Luis Obispo, CA 93401 | tel 805.544.3900 | www.rossetticompany.com

Information contained herein has been obtained from the owner of the property or from other sources deemed reliable. We have no reason to doubt its accuracy, but we do not guarantee it.





AEROVISTA PLACE

PARCEL MAP

Aerovista Place
San Luis Obispo

ROSSETTI COMPANY

COMMERCIAL REAL ESTATE



1301 Chorro Street | San Luis Obispo, CA 93401 | tel 805.544.3900 | www.rossetticompany.com

Information contained herein has been obtained from the owner of the property or from other sources deemed reliable. We have no reason to doubt its accuracy, but we do not guarantee it.

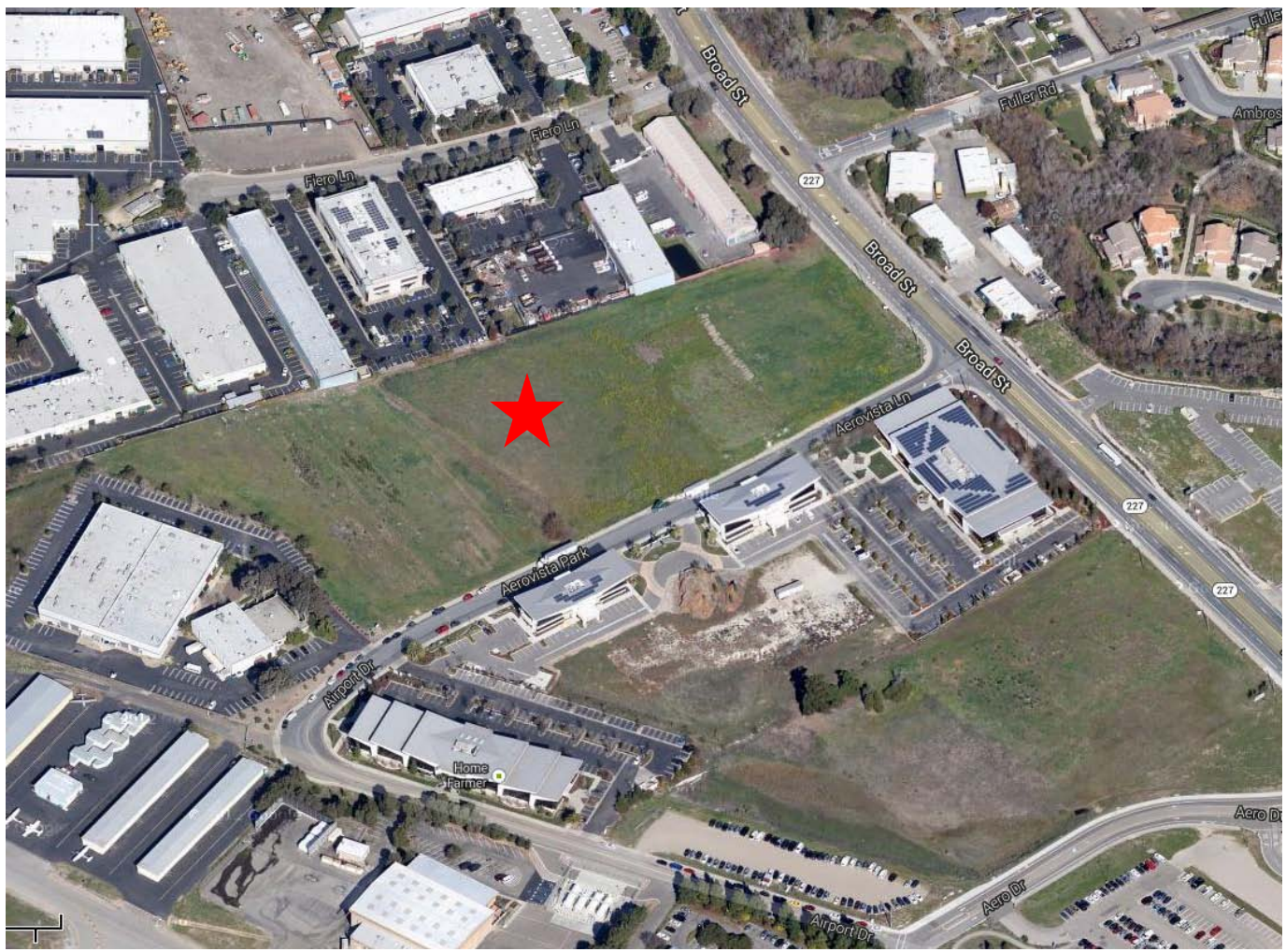


LOCATION

Aerovista Place
San Luis Obispo

ROSSETTI COMPANY

COMMERCIAL REAL ESTATE



1301 Chorro Street | San Luis Obispo, CA 93401 | tel 805.544.3900 | www.rossetticompany.com

Information contained herein has been obtained from the owner of the property or from other sources deemed reliable. We have no reason to doubt its accuracy, but we do not guarantee it.

