

FOR LEASE

583 Marsh Street
Downtown San Luis Obispo

ROSSETTI
COMPANY
COMMERCIAL REAL ESTATE



FEATURES

Comments: New retail space close to Downtown San Luis Obispo. This space is located next to Couch Potato at the corner of Nipomo and Marsh Street. This space is fresh and modern and “move-in ready.”

Size: 1,950 sq. ft.

Location: 583 Marsh Street (Located at the Corner of Marsh and Nipomo)

Price: \$1.95/SF, NNN (~\$0.39)

Type: Retail

Zoning: C-D-MU – Commercial Downtown, Mixed Use

Available: Immediately



CONTACT

John B. Hans, SIOR
805.544.3900 office
805.544.3922 fax
jhans@rossetticompany.com
BRE Lic. #00930565

John Rossetti
805.544.3900 office
805.544.3922 fax
john@rossetticompany.com
BRE Lic. #00524464

1301 Chorro Street | San Luis Obispo, CA 93401 | tel 805.544.3900 | www.rossetticompany.com

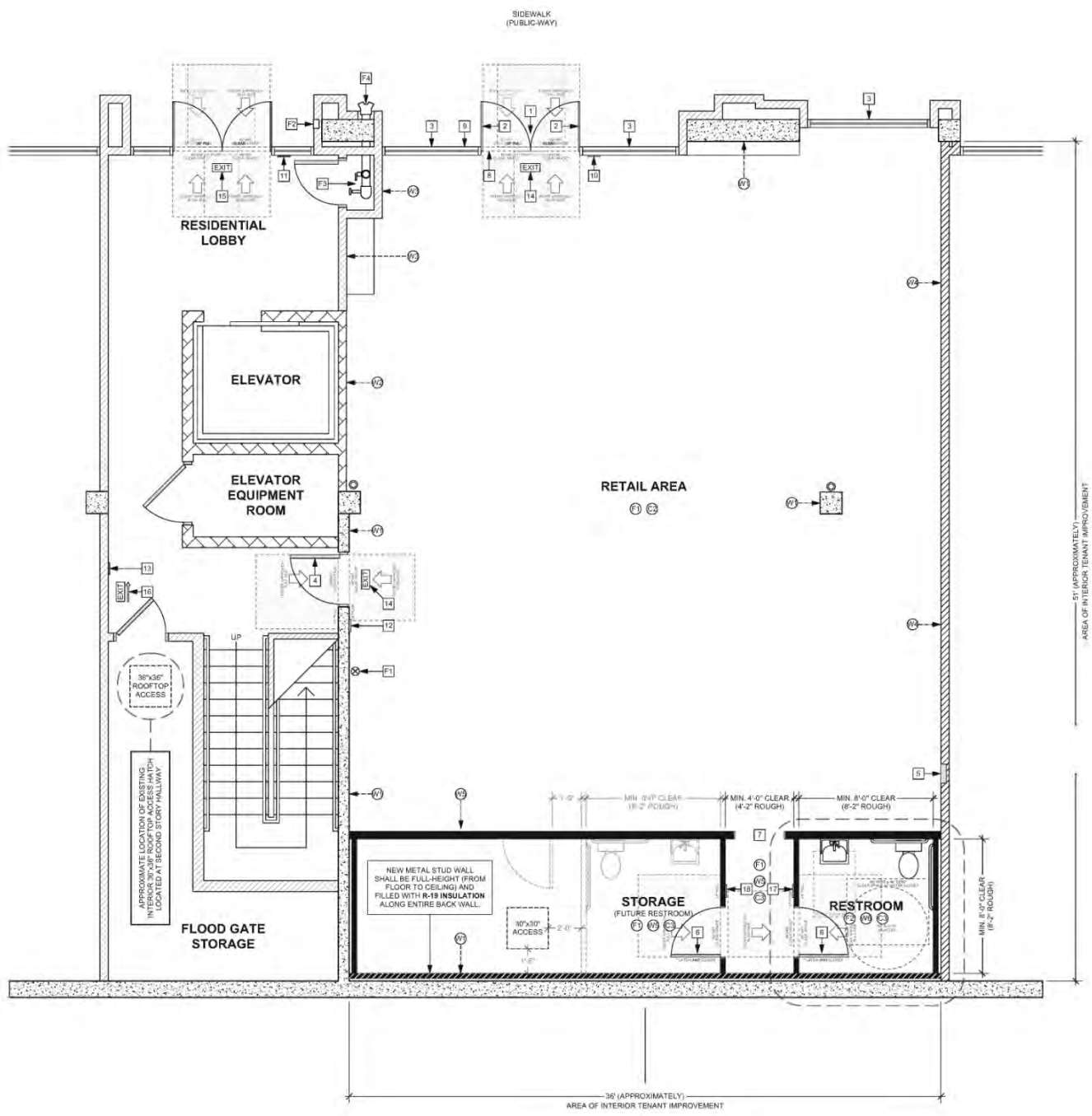
Information contained herein has been obtained from the owner of the property or from other sources deemed reliable. We have no reason to doubt its accuracy, but we do not guarantee it.



FLOOR PLAN

583 Marsh Street
Downtown San Luis Obispo

MARSH STREET



1301 Chorro Street | San Luis Obispo, CA 93401 | tel 805.544.3900 | www.rossetticompany.com

Information contained herein has been obtained from the owner of the property or from other sources deemed reliable. We have no reason to doubt its accuracy, but we do not guarantee it.

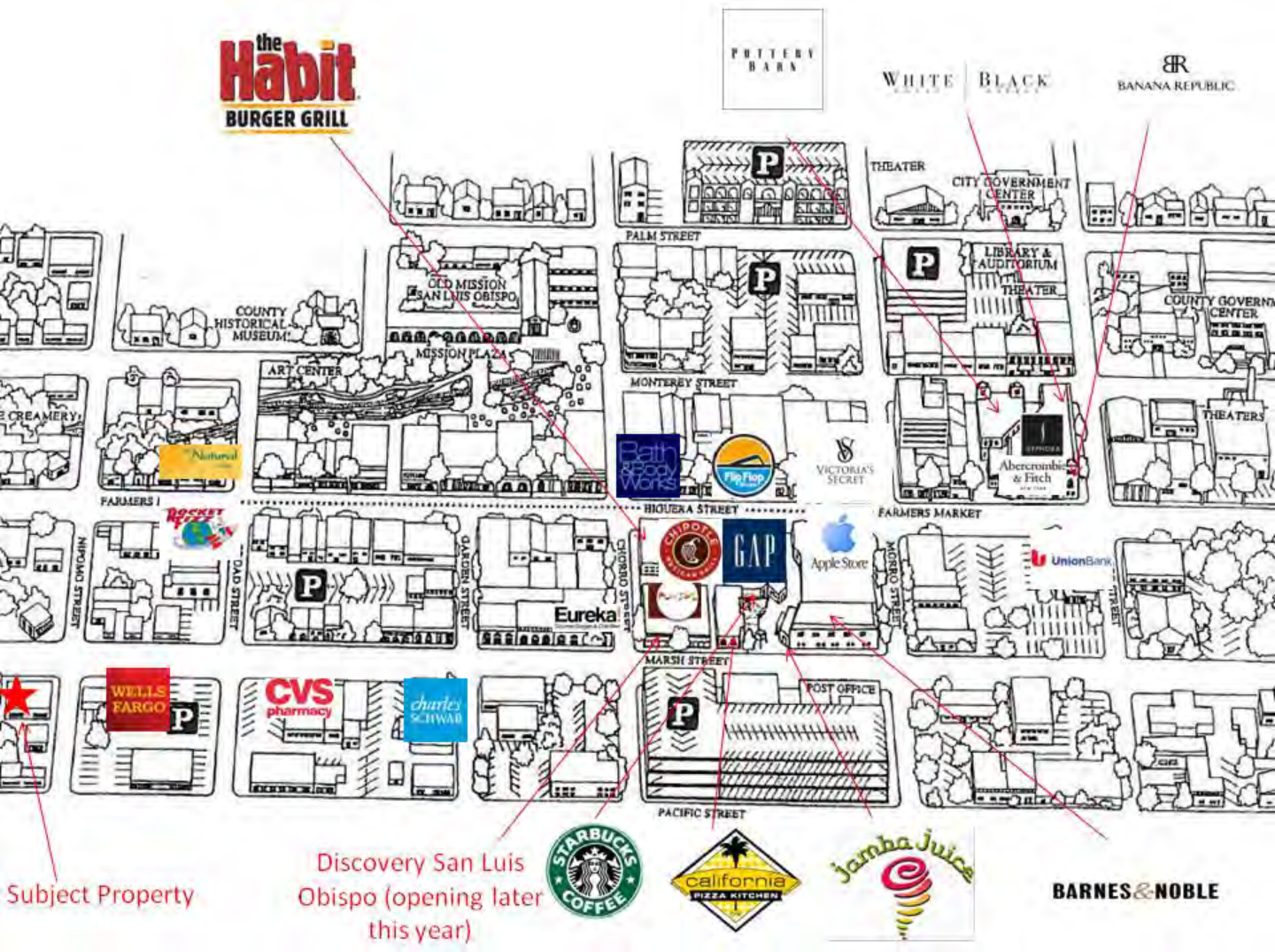


DOWNTOWN MAP

583 Marsh Street
Downtown San Luis Obispo

ROSSETTI COMPANY

COMMERCIAL REAL ESTATE



Subject Property

Discovery San Luis Obispo (opening later this year)



BARNES & NOBLE

1301 Chorro Street | San Luis Obispo, CA 93401 | tel 805.544.3900 | www.rossetticompany.com

Information contained herein has been obtained from the owner of the property or from other sources deemed reliable. We have no reason to doubt its accuracy, but we do not guarantee it.



LOCATION

583 Marsh Street
Downtown San Luis Obispo

ROSSETTI
COMPANY
COMMERCIAL REAL ESTATE



Located Near:

- National retail stores including Apple, Abercrombie & Fitch, Banana Republic, Barnes & Noble, Gap, Express, Pottery Barn, Sephora, White House Black Market.
- Nationally Recognized Thursday Night Farmer's Market
- Downtown Movie Theatres
- California Polytechnic State University
- San Luis Obispo County Government Buildings.

1301 Chorro Street | San Luis Obispo, CA 93401 | tel 805.544.3900 | www.rossetticompany.com

Information contained herein has been obtained from the owner of the property or from other sources deemed reliable. We have no reason to doubt its accuracy, but we do not guarantee it.



LOCATION

583 Marsh Street
Downtown San Luis Obispo

ROSSETTI
COMPANY
COMMERCIAL REAL ESTATE



Demographics:

- 5 Million+ Visitors Per Year
- Education: 60% College Degree or Higher
- Median Household Income: \$70,000.00
- Median Age: 39
- Large Second Home Population (1/3)

Area Facts:

- Located Halfway Between San Francisco and Los Angeles
- San Luis Obispo voted "Happiest City in America" by National Geographic and Oprah, and "Friendliest Town in America" by Rand McNally



Area Attractions:

- Cal Poly State University
- Mission San Luis Obispo de Tolosa
- Hearst Castle
- 200+ Wineries
- Beaches
- Hiking and Biking Trails

1301 Chorro Street | San Luis Obispo, CA 93401 | tel 805.544.3900 | www.rossetticompany.com

Information contained herein has been obtained from the owner of the property or from other sources deemed reliable. We have no reason to doubt its accuracy, but we do not guarantee it.

