

# FOR LEASE

689 Sq. Ft. of Retail/Office Space  
Broad Street Village  
San Luis Obispo

**ROSSETTI**  
**COMPANY**  
COMMERCIAL REAL ESTATE



## FEATURES

**Comments:** Rare opportunity to lease a popular Broad Street Village commercial condo unit, located on Broad Street. Located in the same center as Blackhorse Espresso, Wine Shed and San Luis Kitchen and Bath. Suite is 689 square feet and includes an office/showroom build out. Layout includes a large open space area with back room.

**Location:** 3592 Broad Street, Suite 100

**Price:** \$1,800.00/Month, Gross + Utilities

**Type:** Retail/Office

**Size:** 689 sq. ft. (includes proportionate share of common area)

**Zoning:** CS-S

**Parking:** 1 space for every 300 sq. ft.



## CONTACT

**Preston Thomas, SIOR**

805.544.3900 office

805.544.3922 fax

preston@rossetticompany.com

DRE Lic. #01378821

1301 Chorro Street | San Luis Obispo, CA 93401 | tel 805.544.3900 | www.rossetticompany.com

Information contained herein has been obtained from the owner of the property or from other sources deemed reliable. We have no reason to doubt its accuracy, but we do not guarantee it.

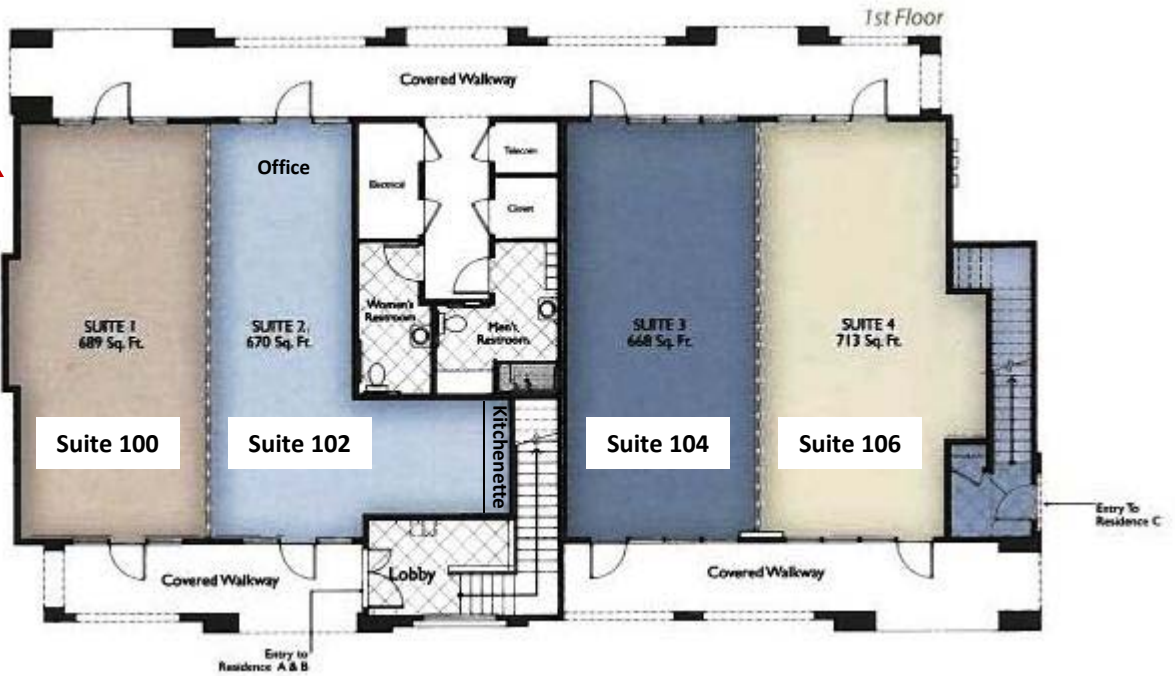


# LOCATION

Broad Street Village  
San Luis Obispo

# ROSSETTI COMPANY

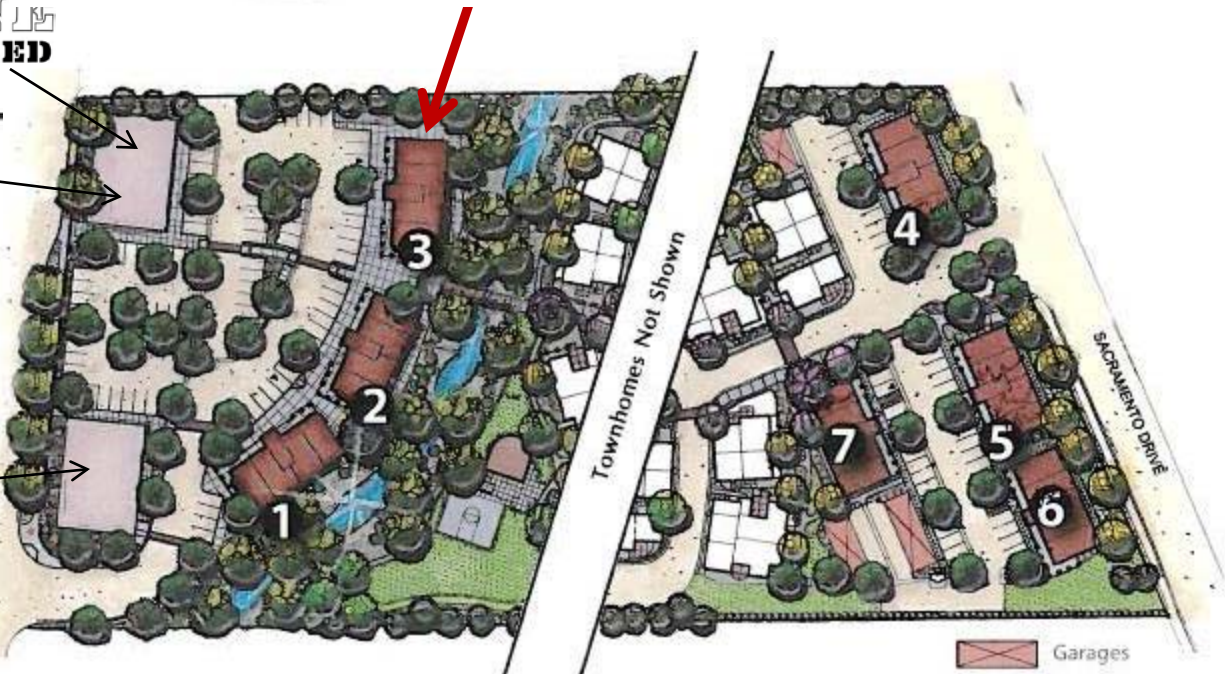
COMMERCIAL REAL ESTATE



WIN A  
SHED



BROAD STREET



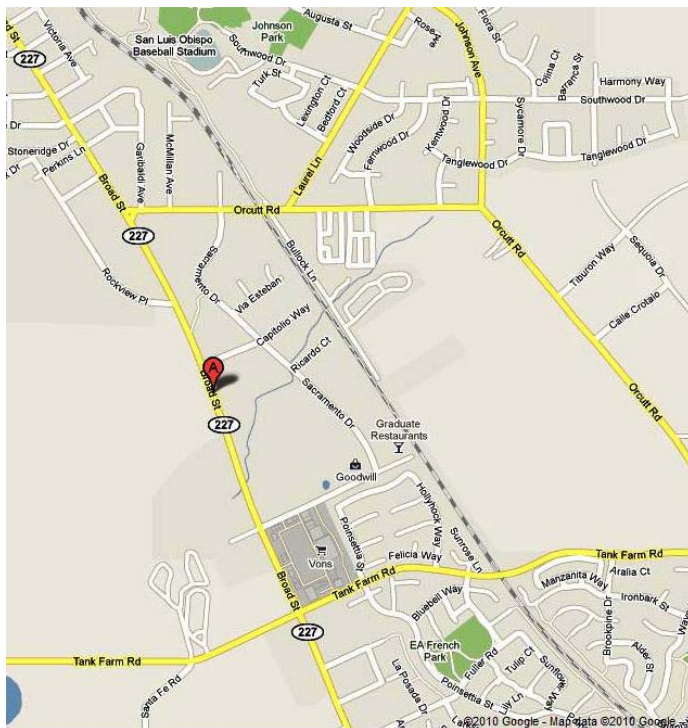
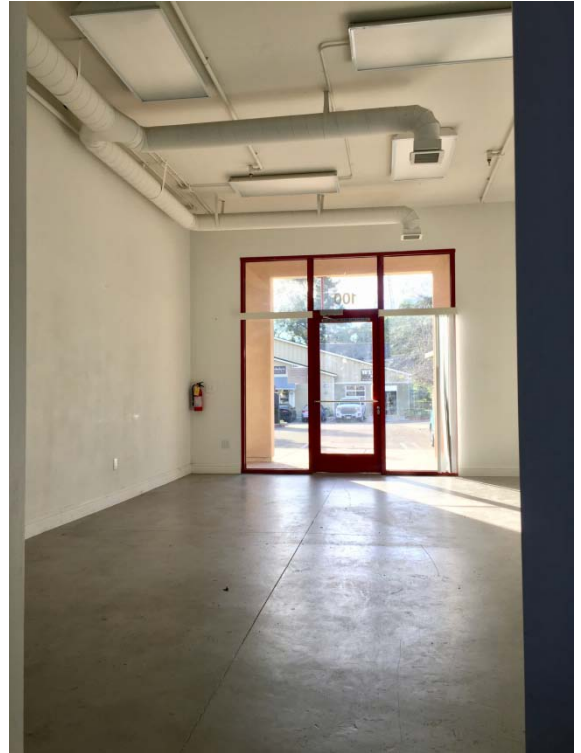
1301 Chorro Street | San Luis Obispo, CA 93401 | tel 805.544.3900 | www.rossetticompany.com

Information contained herein has been obtained from the owner of the property or from other sources deemed reliable. We have no reason to doubt its accuracy, but we do not guarantee it.



# LOCATION

Broad Street Village  
San Luis Obispo



1301 Chorro Street | San Luis Obispo, CA 93401 | tel 805.544.3900 | [www.rossetticompany.com](http://www.rossetticompany.com)

Information contained herein has been obtained from the owner of the property or from other sources deemed reliable. We have no reason to doubt its accuracy, but we do not guarantee it.

