

FOR LEASE

Retail/Restaurant Space
Northeast Corner of Broadway and Enos
Santa Maria, CA

ROSSETTI COMPANY

COMMERCIAL REAL ESTATE



FEATURES

Comments: Great hard corner location on Broadway, in front of the new Vallarta Supermarket. Available first quarter 2018. Across the street from FoodsCo, Subway, Big Lots, Starbucks and JC Penney. A very busy part of town.

Location: Northeast Corner Broadway and Enos, Santa Maria

Lease: \$2.50/SF, NNN (~\$0.45)

Type: Retail

Total size: 990 – 4,050 SF of Building Area

Zoning: C-1 (Central Business District)



CONTACT

John B. Hans, SIOR
805.544.3900 office
jhans@rossetticompany.com
BRE Lic. #00930565

John Rossetti
805.544.3900 office
john@rossetticompany.com
BRE Lic. #00524464

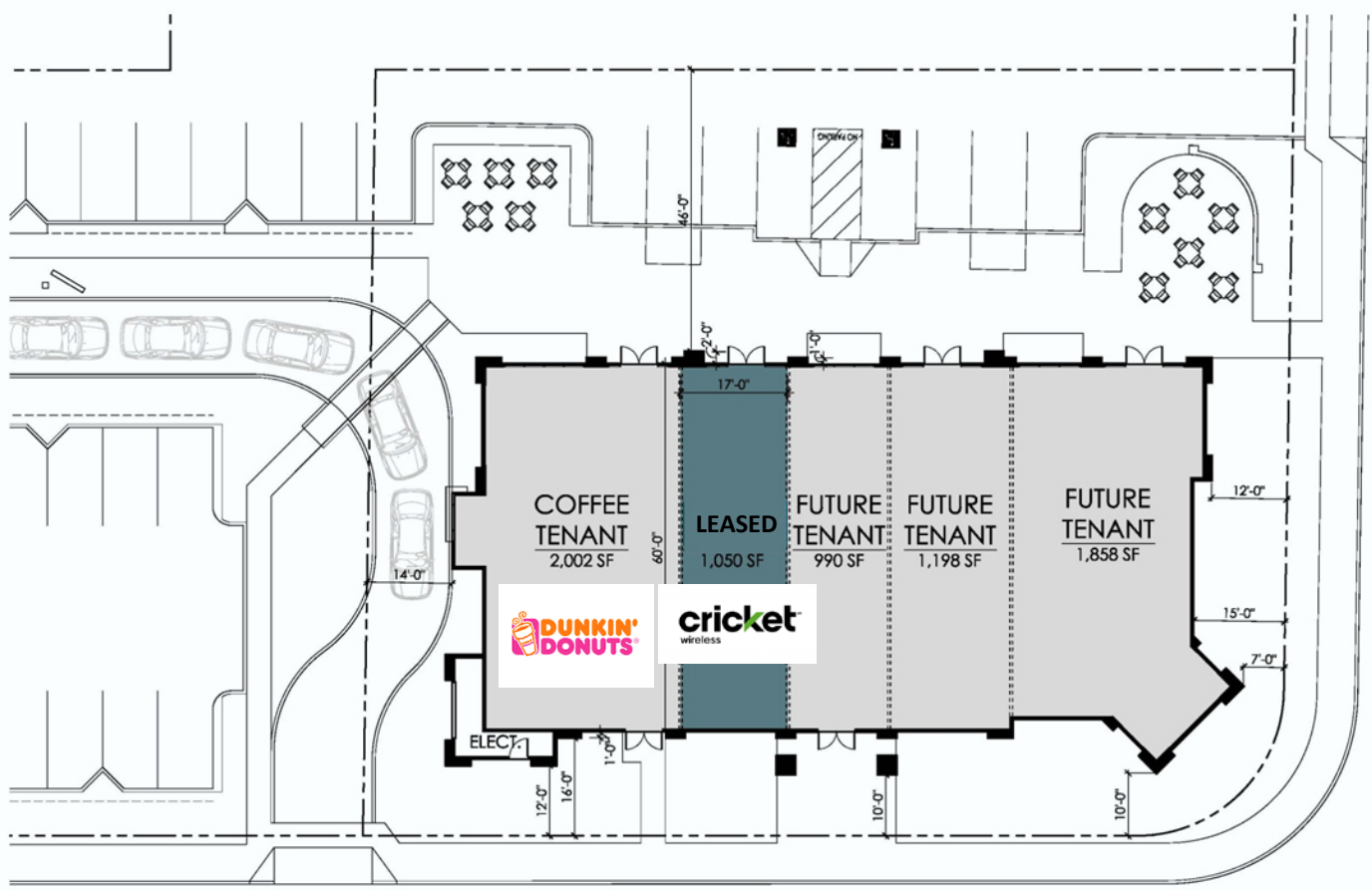
1301 Chorro Street | San Luis Obispo, CA 93401 | tel 805.544.3900 | www.rossetticompany.com

Information contained herein has been obtained from the owner of the property or from other sources deemed reliable. We have no reason to doubt its accuracy, but we do not guarantee it.



SITE PLAN

1490 S. Broadway
Santa Maria



BROADWAY

Information contained herein has been obtained from the owner of the property or from other sources deemed reliable. We have no reason to doubt its accuracy, but we do not guarantee it.



AREA MAP

1490 S. Broadway
Santa Maria



1301 Chorro Street | San Luis Obispo, CA 93401 | tel 805.544.3900 | www.rossetticompany.com

Information contained herein has been obtained from the owner of the property or from other sources deemed reliable. We have no reason to doubt its accuracy, but we do not guarantee it.



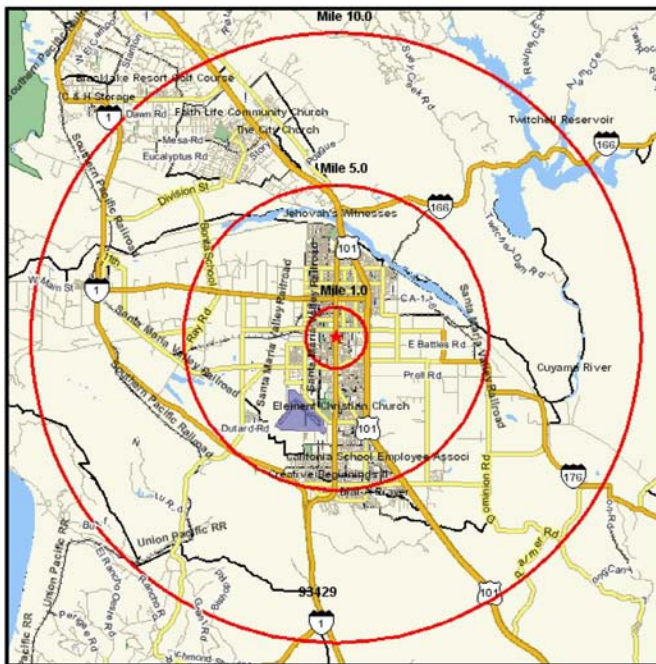
DEMOGRAPHICS

1490 S. Broadway
Santa Maria

ROSSETTI
COMPANY
COMMERCIAL REAL ESTATE

Demographics	1-Mile	5-Miles	10-Miles
2010 Census Households	5,503	36,231	46,788
2015 Est. Households	5,752	37,743	48,872
2020 Proj. Households	6,046	39,648	51,406
2015 Est. Avg. HH Income	\$60,248	\$71,429	\$73,946

	1-Mile	5-Miles	10-Miles
2015 Est. Households by Household Type	5,752	37,743	48,872
Family Households	4,238 (73.68%)	28,634 (75.87%)	37,375 (76.48%)
Nonfamily Households	1,515 (26.34%)	9,109 (24.13%)	11,497 (23.52%)



1490 S BROADWAY
SANTA MARIA, CA 93454-6914
Coord: 34.934547, -120.435749
Radius - See Appendix for Details

Legend

- ★ Point
- Interstate Highways
- US Highways
- State Highways
- Major Highways
- Major Roads
- Roads
- Railroads
- Landmarks
- Parks
- Hydrography
- Airports
- Block Groups
- Tracts
- MCD
- Area Zip Codes
- County
- Core Based Statistical Areas



1301 Chorro Street | San Luis Obispo, CA 93401 | tel 805.544.3900 | www.rossetti.com

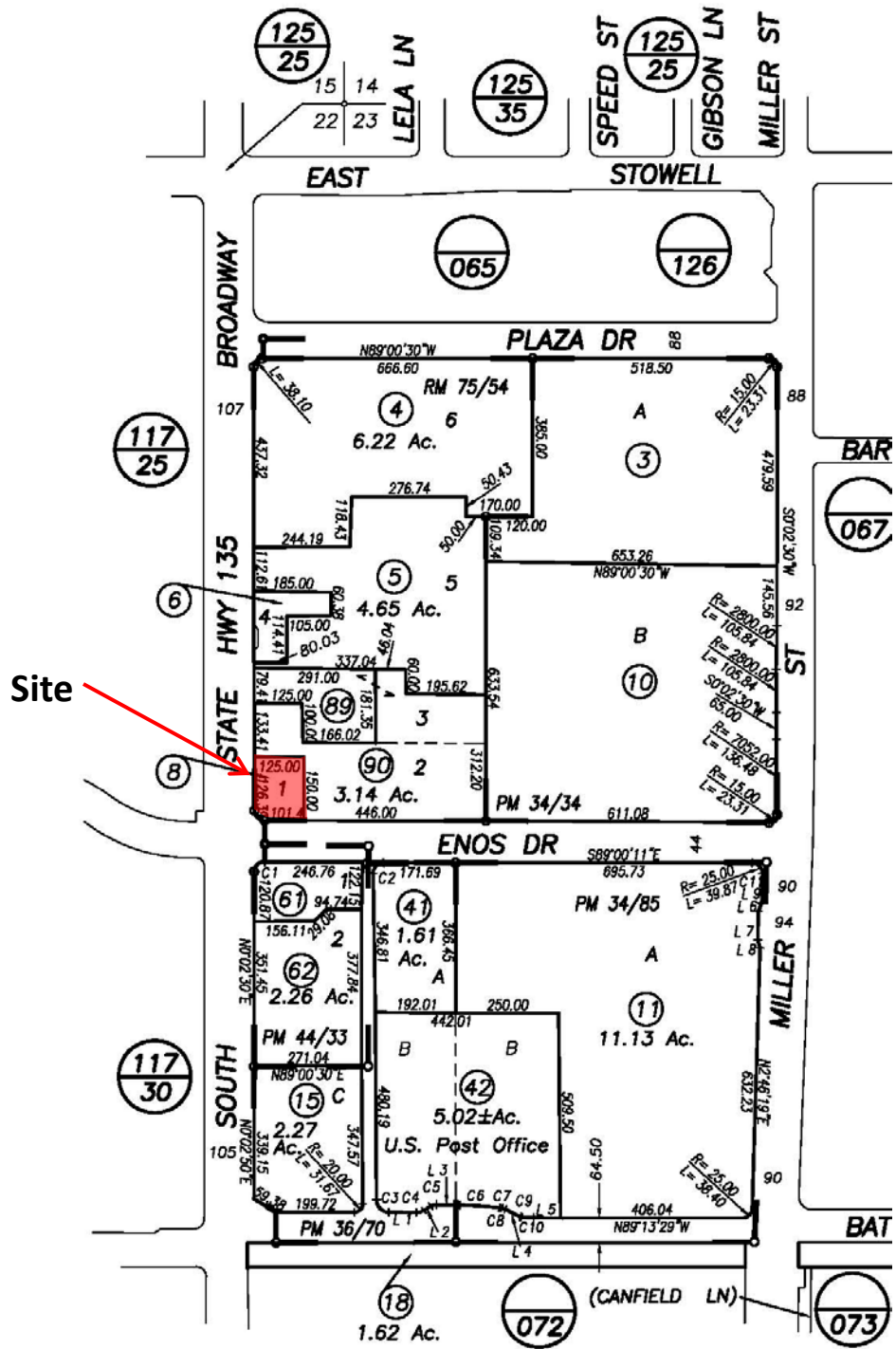
Information contained herein has been obtained from the owner of the property or from other sources deemed reliable. We have no reason to doubt its accuracy, but we do not guarantee it.



PARCEL MAP

1490 S. Broadway
Santa Maria

ROSSETTI
COMPANY
COMMERCIAL REAL ESTATE



1301 Chorro Street | San Luis Obispo, CA 93401 | tel 805.544.3900 | www.rossetticompany.com

Information contained herein has been obtained from the owner of the property or from other sources deemed reliable. We have no reason to doubt its accuracy, but we do not guarantee it.

